

Blenheim



General Product Information

| | |
|---------------|--------------|
| Wood Species: | European Oak |
| Composition: | Engineered |
| Surface: | Sanded |
| Finishing: | Unfinished |

Dimensions & Gradings

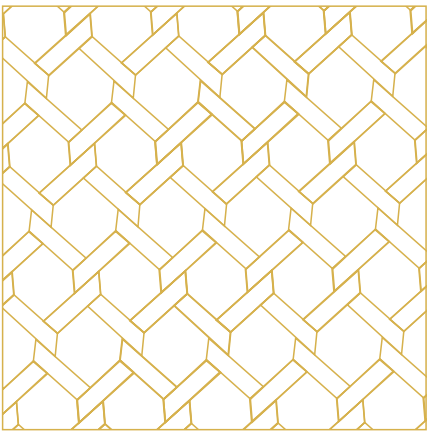
Versaille Panel

| | |
|------------|-------------------|
| Thickness: | 15mm & 20mm |
| Size: | 200mm x 325mm |
| | |
| Gradings: | Rustic A & Select |



Technical Information

| | |
|----------------------|--|
| Profile: | Tongue & Groove |
| Bevel options: | Bevel edge |
| Construction: | 15mm: 3.5mm hardwood wear layer glued to 12mm multi layer WBP Birch / Eucalyptus plywood 20mm: 5.5mm hardwood wear layer glued to 15mm multi layer WBP Birch / Eucalyptus plywood |
| Use: | Indoor |
| Site conditions: | between 40-65% relative humidity and 15oC - 25oC room temperature |
| Installation method: | Glue Down |
| Under Floor Heating: | Suitable for radiant underfloor heating when installed according to G&F instructions for UFH |



Product Code: HC104BMW

info@graceandfrasier.com
www.graceandfrasier.com

This document has been prepared by Grace & Frasier
Grace & Frasier reserve the right to change the specification of this product at any time without obligation to notify a third party.